

open flightmaps

HELIPORT

LOIW

HELI 1

EFFECTIVE: 15.07.2020 - revision 1.0

TABLE OF CONTENTS

AD-1	TAXI LAYOUT	(2)
AD-2	BRIEFING	(3)
ENR-1	VFR-TRANSIT	(4)
PRC-1	VFR DEP/ARR	(5)

TAXI LAYOUT (HELI)

AD-1

ARP: N47 35 07 E012 35 33 | Elev: 2493 FT | Var: 3° E ()

JET-A1 PPR VFR

FATO lighting Activation by Phone 05353 630270

Final Approach and Take-Off Areas - FATOs

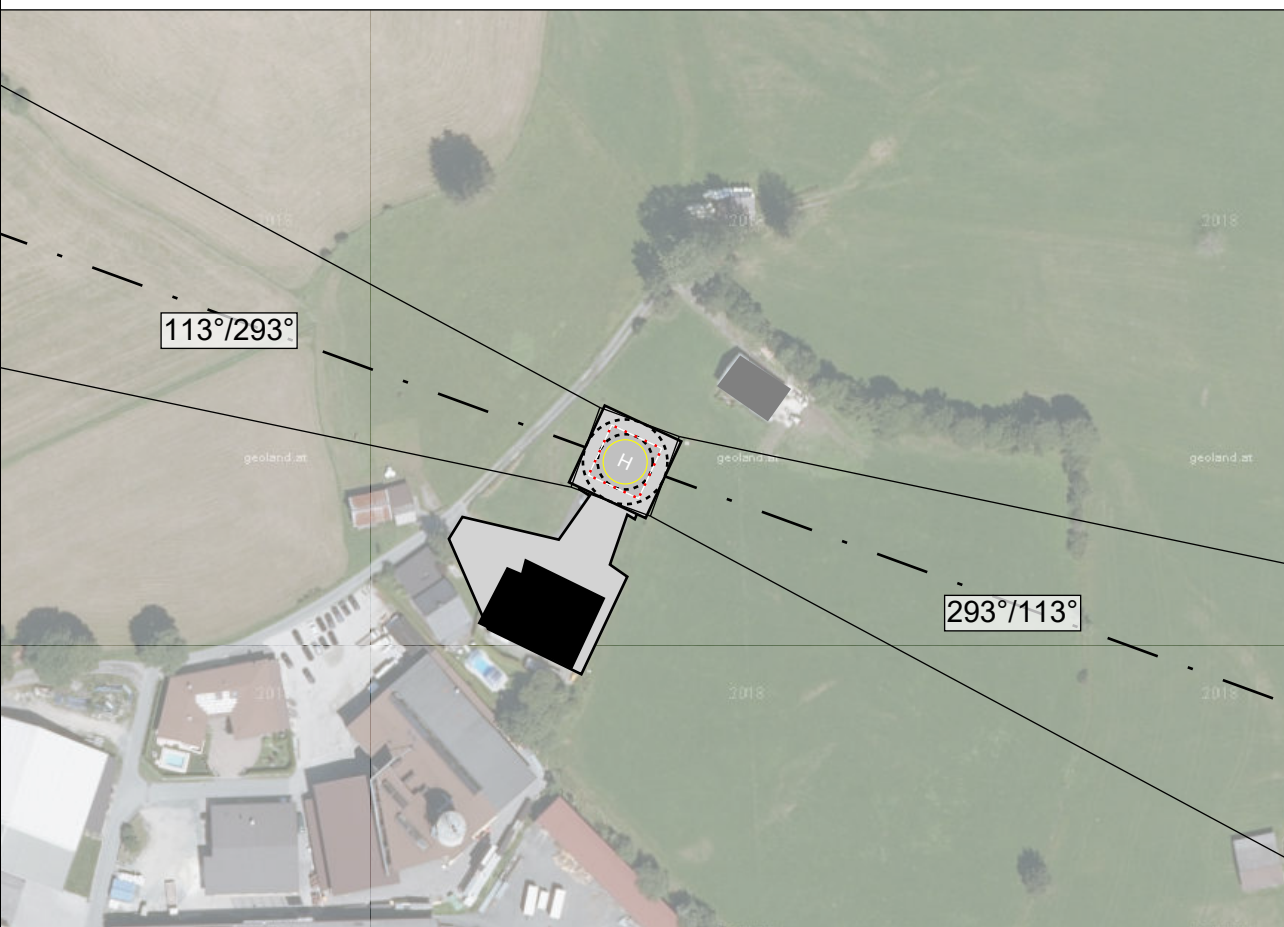
GENERAL NOTES

NIL

PHYSICAL CHARACTERISTICS

FATO	STATUS	MAX D	WIDTH	LENGTH	PERF CLASS	ELEVATION	PAVEMENT	SLOPE
LOIW	ACTIVE	14	15 M	15 M	2	2500 FT	ASPH	0

PROFILE, MARKINGS AND OTHER REMARKS



Not to be used as primary source of navigation

Procedure DIR 11/29 29/11

APP/DEP SECTORS

DIR	STATUS	CRS	GS	LAT EXTEND	EXTEND	TODAH	RTODAH	LDAH	NIGHT OPS
11/29	ACTIVE	113°/293°	10%	30%	1000 M	75 M	75 M	75 M	YES
29/11	ACTIVE	293°/113°	10%	30%	1000 M	75 M	75 M	75 M	YES

Touch-down and Lift-off Areas - TLOFs

PHYSICAL CHARACTERISTICS

TLOF	DIMENSIONS	D MAX	PAVEMENT	LIGHTING-TYPE
LOIW	15 x 15 M	14	6000kg	EDGE

www.openflightmaps.org

open flightmaps

Approach and Departure Procedures

The Heliport is located East of the town of Waidring.
Do not overfly the town of Waidring or nearby buildings if possible.

Approach at Night

Approaches and Departures at Night are just allowed for Company Pilots and Pilots of our Cooperation Partner!

Lighting at Night for Approach and Departure

The Heliport lighting system can be turned on by calling, Tel: +435353/630217.

Fuel Service

Fueling is just allowed for Company Helicopters and Helicopters of our Cooperation Partner.
The Fueling area is North of the Hangar, next to the Fuel Station.

Contact

The Heliport is from beginning December – Eastern from 08:00AM-18:00PM or Sunset open.

Tel: +435353/6302

Cell: +43676/84649118

E-Mail:

Heli1@notarzthelicopter.at

An und Abflugverfahren

Der Heliport befindet sich am oestlichen Rand von Waidring.
Es soll das Überfliegen vom Waidring und dem umliegenden Gebäuden vermieden werden.

Anflüge bei Nacht

Nacht An - Abflüge sind nur für Firmeneigene, Kooperationspartner im Einsatz gestattet.

Beleuchtung bei Nacht An- und Abflügen

Die Heliportbeleuchtung kann per Telefon unter Tel.: +43 5353/630217 in Betrieb genommen werden.

Betankung

Das Betanken ist einzig Firmeneigene Hubschraubern und jene von Kooperationspartnern vorbehalten.
Die Betankung erfolgt auf der Nord Seite der dafür vorgesehen Betonierten - Fläche neben der Tankstelle.

Kontakt

Der Stützpunkt ist von Anfang Dezember bis ca. Ostern Tage von 08:00 bis 18:00 bzw. SS besetzt.

Telefonisch erreichbar unter:

Tel.: +43 5353/6302

Mobil: +43 676/84649118

E- Mail:

heli1@notarzthelicopter.at

VFR-TRANSIT (HELI)

ENR-1

HELI 1
LOIW

ARP: N47 35 07 E012 35 33 | Elev: 2493 FT | Var: 3° E ()

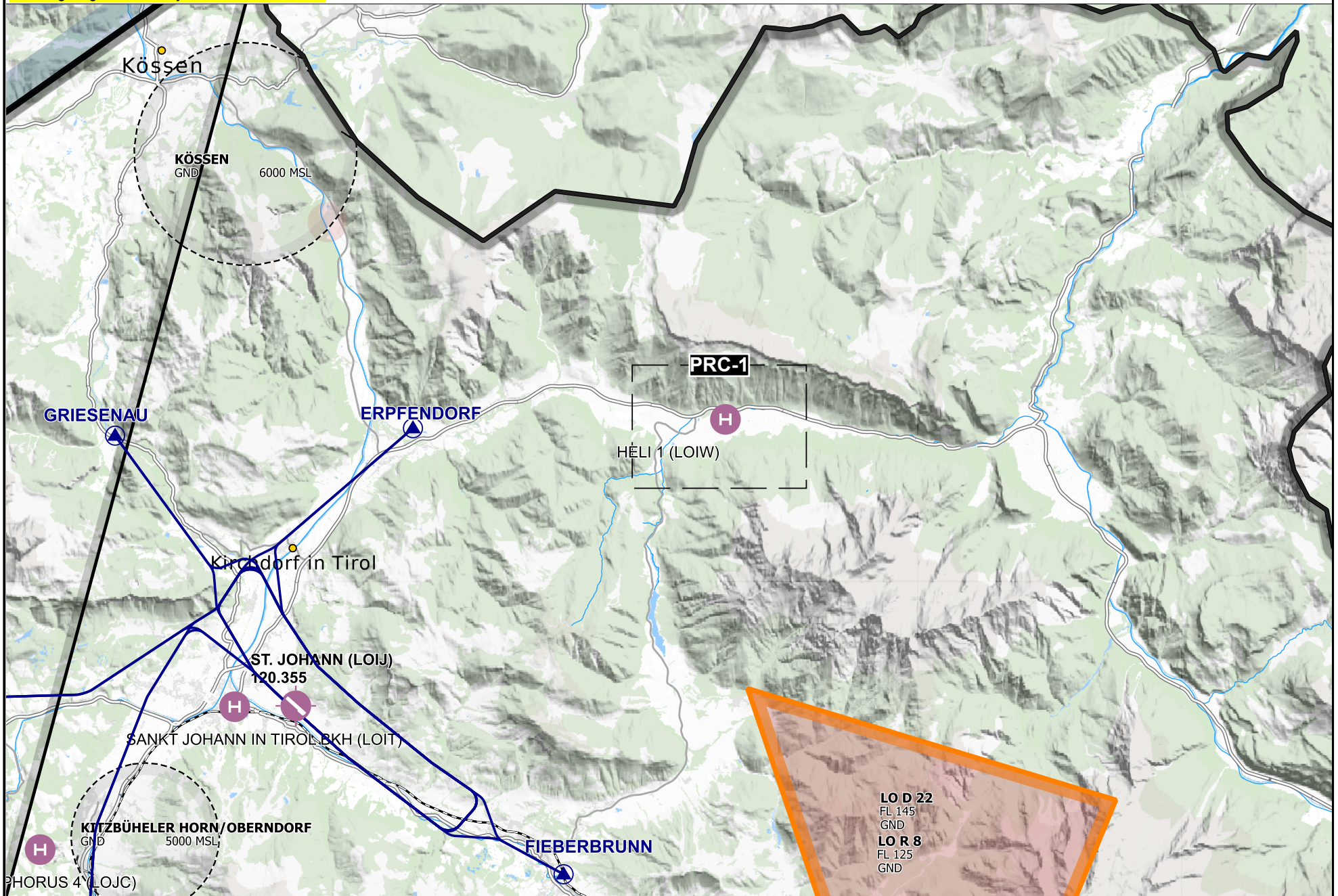
JET-A1 PPR VFR

FATO lighting Activation by Phone 05353 630270

Not to be used as primary source of navigation

www.openflightmaps.org

openflightmaps



2020-07-15 07:14 UTC :

ENR-1

LOIW

LO

ARP: N47 35 07 E012 35 33 | Elev: 2493 FT | Var: 3° E ()

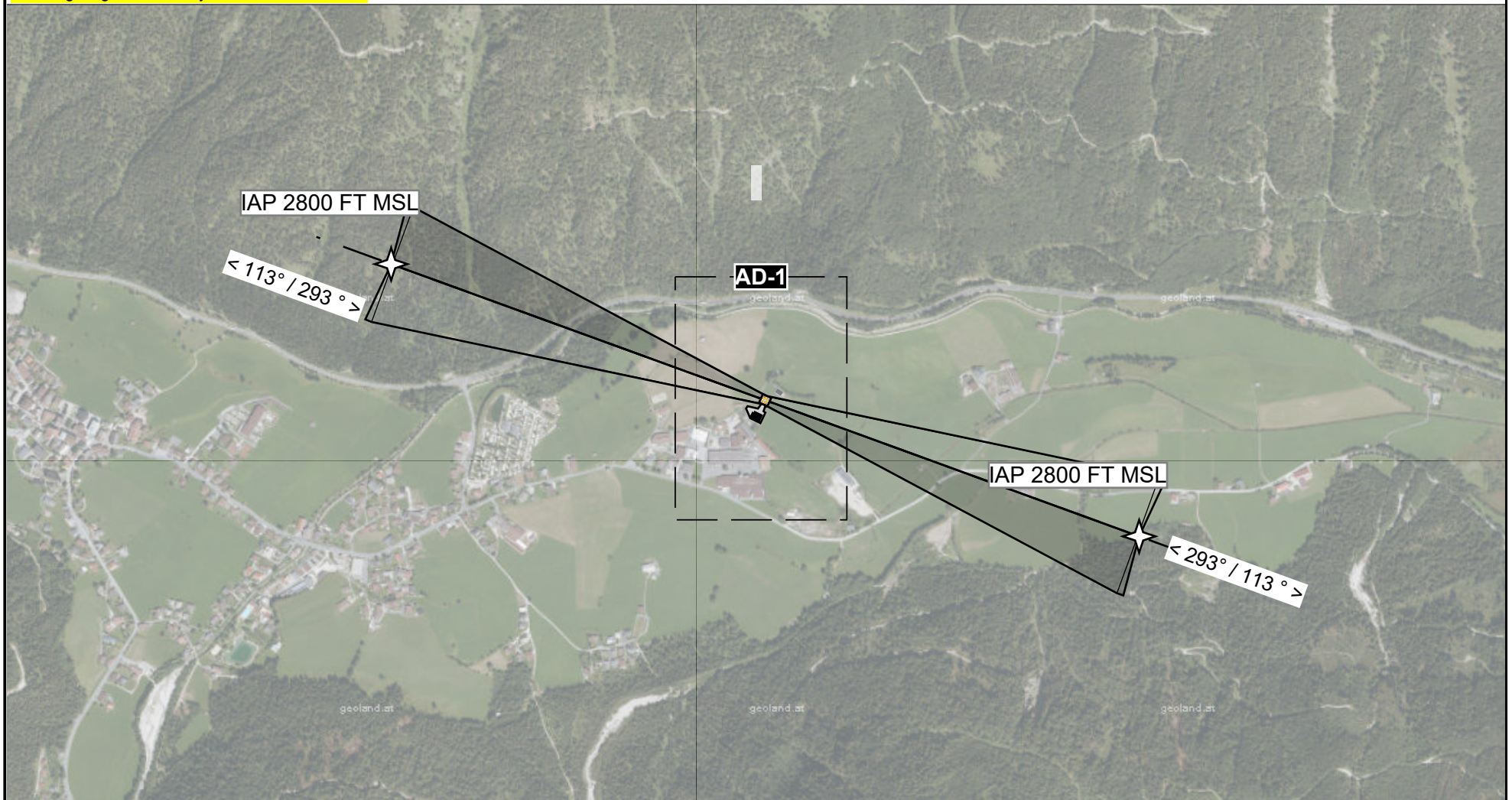
JET-A1 PPR VFR

FATO lighting Activation by Phone 05353 630270

Not to be used as primary source of navigation

www.openflightmaps.org

openflightmaps



Procedure **DIR 11/29 29/11**

APP/DEP SECTORS

DIR	STATUS	CRS	GS	LAT EXTEND	EXTEND	TODAH	RTODAH	LDAH	NIGHT OPS
11/29	ACTIVE	113°/293°	10%	30%	1000 M	75 M	75 M	75 M	YES
29/11	ACTIVE	293°/113°	10%	30%	1000 M	75 M	75 M	75 M	YES